

## Anti-LILRB1/LILRB2 hIgG1 Antibody

### 产品信息

GM-47134AB-10	10 µg
GM-47134AB-100	100 µg
GM-47134AB-1000	1 mg

### 抗体信息

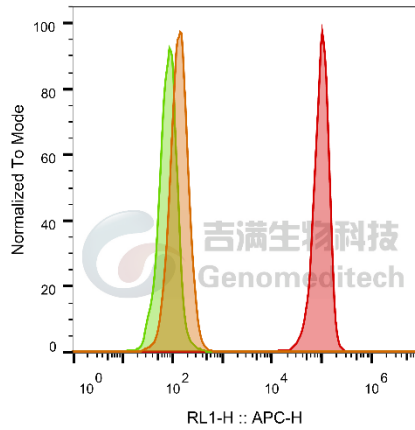
Species Reactivity	Human
Specificity	Detects human LILRA1. Rhesus LILRB1.
Source/Isotype	Monoclonal Human IgG1
Gene ID	LILRA1:11024; LILRB1: 692340
Application	Flow cytometry: 1 µg-4 µg /1E6 cells; FC-Quality tested
Background	<p>Some of the inhibitory mechanisms of the immune system use proteins from the leukocyte Ig-like receptor (LILR) family. The leukocyte Ig-like receptor subfamily B (LILRB) is a group of type I transmembrane glycoproteins with extracellular Ig-like domains and cytoplasmic immunoreceptor tyrosine-based inhibitory motifs (ITIMs). This group of ITIM-containing receptors includes 5 members: LILRB1 (also known as CD85J, LIR1, ILT2), LILRB2 (also known as CD85D, LIR2, ILT4), LILRB3 (also known as CD85A, LIR3, ILT5), LILRB4 (also known as CD85K, LIR5, ILT3), and LILRB5 (also known as CD85C, LIR8). The biological functions and clinical significance of many of these LILRBs (ILTs) are still being investigated. There is also a LILR subfamily A (LILRA) that is a group of type I transmembrane glycoproteins with extracellular Ig-like domains and cytoplasmic immunoreceptor tyrosine-based activating motifs (ITAMs). This group of ITAM-containing receptors includes 6 members: LILRA1 (also known as CD85I, LIRE), LILRA2 (also known as CD85H, LIR7, ILT1), LILRA3 (also known as CD85E, LIR4, ILT6, monocyte inhibitory receptor HM43/31), LILRA4 (also known as CD85G, ILT7), LILRAS (also known as CD85F, LIR9, ILT11), and LILRA6 (also known as ILT8). The inhibitory and activating proteins of the LILR family appear to work in concert to modulate immune homeostasis.</p>
Storage	Store at +4°C short term (1-2 weeks). Store at -20°C long term
Formulation	Phosphate-buffered solution, pH 7.2.

Version:2.1 Revision Date:10/10/2022

## Data Examples

Flow cytometry

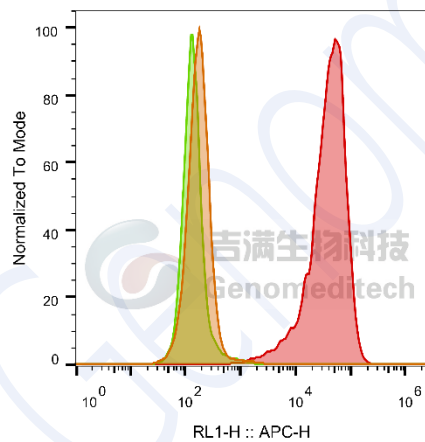
Rhesus\_LILRB1 CHO-K1 Cell Line (Catalog # GM-C24276) was stained with Anti-LILRB1/LILRB2 hIgG1 Antibody (Catalog # GM-47134AB) or isotype control antibody, followed by anti-Human IgG APC-conjugated Secondary Antibody.



SampleID	Geometric Mean : RL1-H
CHO-K1 anti-LILRB1/LILRB2+APC-2nd Ab	138
CHO-K1 Rhesus_LILRB1 H_IgG+APC-2nd Ab	85.4
CHO-K1 Rhesus_LILRB1 anti-LILRB1/LILRB2+APC-2nd Ab	89980

Flow cytometry

H\_LILRA1 HEK-293 Cell Line (Catalog # GM-C25396) was stained with Anti-LILRB1/LILRB2 hIgG1 Antibody (Catalog # GM-47134AB) or isotype control antibody, followed by anti-Human IgG APC-conjugated Secondary Antibody.



SampleID	Geometric Mean : RL1-H
HEK-293 anti-LILRB1/LILRB2+APC-2nd Ab	176
HEK-293 H_LILRA1 H_IgG+APC-2nd Ab	140
HEK-293 H_LILRA1 anti-LILRB1/LILRB2+APC-2nd Ab	35729

流式验证结果

Version:2.1 Revision Date:10/10/2022